



CATCH ME



1989 HATTERAS Convertible

LOA: 65' (19.81m)
Beam: 18' (5.49m)
Max Draft: 5' 4" (1.63m)
Speed: Cruising 20 Knots (23 MPH)
Max 28 Knots (32 MPH)

Delivery/Model Year: 1989
Builder: HATTERAS
Type: Sport Fisherman
Convertible
Price: \$499,000 USD
Location: Fort Lauderdale, Florida
United States

Peck Yachts
2866 NE 29th Street
Ft.Lauderdale, Florida 33306
United States

info@peckyachts.com
www.peckyachts.com

CATCH ME

Additional Specifications For CATCH ME:

LOA:	65' (19.81m)	Delivery/Model	1989
Beam:	18' (5.49m)	Year:	
Max Draft:	5' 4" (1.63m)	Year Built:	1988
Hull Material:	Fiberglass	Builder:	HATTERAS
Tonnage:		Model:	Convertible
Speed:	Cruising 20 Knots (23 MPH) Max 28 Knots (32 MPH)	Type:	Sport Fisherman Convertible
Fuel Capacity:	1,674.00 Gal (6,336.78 L)	Top:	Enclosed
Water Capacity:	460.00 Gal (1,741.29 L)	Engines:	1035 HP, Twin, Inboard, Diesel, Detroit Diesel, 12V92,
Holding Tank:	60.00 Gal (227.12 L)	Staterooms:	3
Flag:	USA	Heads:	3
Location:	Fort Lauderdale, Florida United States	Classifications:	
Price:	\$499,000 USD	MCA: ISM:	

Manufacturer's Provided Description

A hugely successful model (120 were built), the Hatteras 65 Convertible is the best-selling sportfishing boat her size ever built. She was a step up from the Hatteras 60 Convertible with more aggressive styling and performance. The hull is an extended version of the 60 Convertible's hull with a finer entry, balsa-cored hullsides, and prop pockets to level the engines. With an 18-foot beam, the Hatteras 65 is a big boat with the accommodations of a small motoryacht. Most were delivered with a three-stateroom three-head interior with the galley and dinette forward in a beautifully appointed salon. Below, the master stateroom with island queen bed is forward. Just aft of the master stateroom, to port, is a VIP stateroom with side-by-side beds. The starboard guest stateroom has upper and lower berths. All three heads have stall showers. A door aft of the staterooms opens to a utility room with washer/dryer, full-size freezer, etc. A four-stateroom interior was optional. The enclosed bridge features a leather settee to port and single helm chair forward. The 183-square-foot is massive

Updates

- Custom exterior Paint by Luu Marine
- Custom bridge stairway
- Completely refit mezzanine
- Extended aft fly bridge
- Full teak cockpit deck
- New windows throughout boat
- Fully refit salon, galley, and all staterooms
- All new appliances
- Full refit on all navigation and A/V electronics (navigation, tv's, sat domes, amplifiers, speakers)
- No expense spared, nicest 65 in its class

Cockpit

- Dometic Eskimo chipper
- 5400 btu
- Freezer box
- Refrigerator box
- 5- Sea Vision LED 24v underwater light
- Sony cam

Galley

- Kenmore Elite convection/microwave
- GE Profile 4 burner stove top
- 2- Vitrefrigo freezer refrigerator
- Uline ice machine
- Uline wine cooler
- 55" Samsung TV
- Bose Lifestyle Surround
- New LED lighting

Staterooms

- 36" Samsung TV
- 27" LG TV
- 30" TCL TV
- Bose Lifestyle Sound
- 3-Galley Maid heads throughout
- New LED lighting

Peck Yachts

2866 NE 29th Street
Ft.Lauderdale, Florida 33306
United States

info@peckyachts.com
www.peckyachts.com

CATCH ME

Electronics

- Standard Horizons VHF
- Fusion ms-ud755
- Lower station fusion
- Upgrade Bluetooth booster
- 2- JL Amps
- 8 JL 770speakers 3 zones
- 2-Acr spot lights
- Furuno RD33
- Standard Horizons gx2360s
- 2-Garmin 8616
- 2-8612 Garmin
- Simrad autopilot AP48
- Garmin 6' open ray radar
- Airmar 2kw CHIRP
- KVH TV5 SD
- New side power bow thruster

Crew

- Stacked washer/dryer
- GE 14 cubic ft freezer

Bow

- New Maxwell windless 250ft 5/8" chain
- 2000lb Davit new (2015)

Engine Room

- 5- New Dometic Cruise Air ac systems throughout (2016) with SMXII controllers
- New freshwater water pumps
- Dolphin 800gpd water maker
- Twin Racor spinon primaries
- Kolher (2015) 20kw
- Onan (1989) 20kw
- 2- Sony cam
- New batteries (09/19)

Exclusions

Exclusions to include but are not limited to, owner's personal items. A detailed list of exclusions to be provided at time of sale upon written request from Buyer.

Disclaimer

The Company offers the details of this vessel in good faith but cannot guarantee or warrant the accuracy of this information nor warrant the condition of the vessel. A buyer should instruct his agents, or his surveyors, to investigate such details as the buyer desires validated. This vessel is offered subject to prior sale, price change, or withdrawal without notice.

Disclaimer

The Company offers the details of this vessel in good faith but cannot guarantee or warrant the accuracy of this information nor warrant the condition of the vessel. A buyer should instruct his agents, or his surveyors, to investigate such details as the buyer desires validated. This vessel is offered subject to prior sale, price change, or withdrawal without notice.

Main Salon



Main Salon



Main Salon



Main Salon



Galley



Galley



Galley



Galley Dining



Hallway



Master



Master



Master



Master Head



Master Head



Twin Stateroom



Twin Stateroom



Twin Stateroom Head



3rd Stateroom or Crew



3rd Stateroom or Crew



3rd Stateroom or Crew Head



FlyBridge Helm



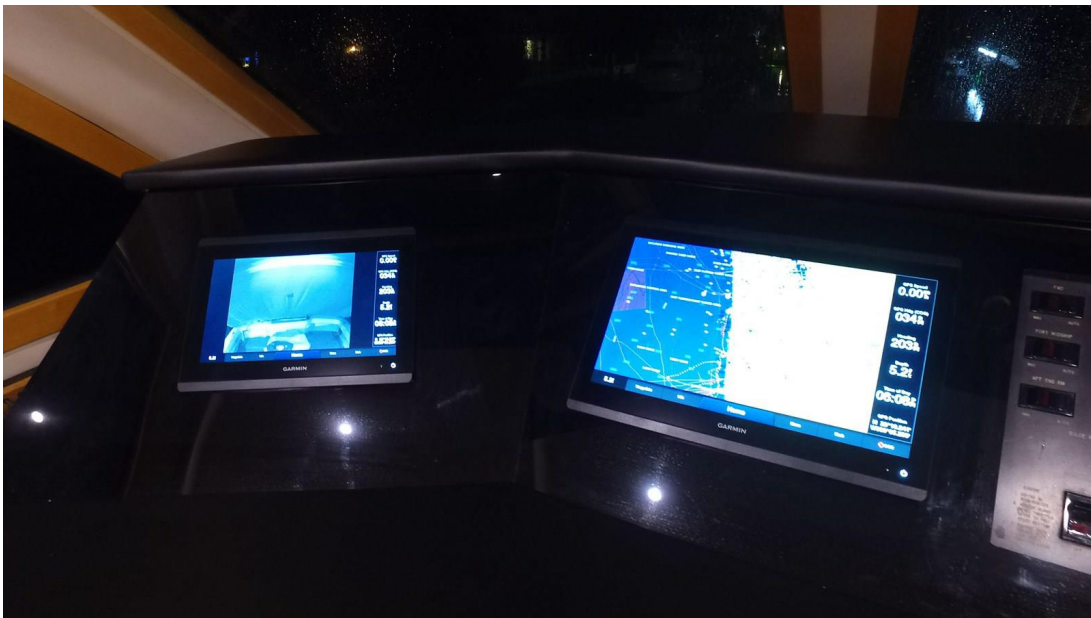
FlyBridge Helm



FlyBridge Helm



FlyBridge Helm



FlyBridge Helm



FlyBridge Helm



FlyBridge Helm



FlyBridge Helm Chair



FlyBridge Helm Chair



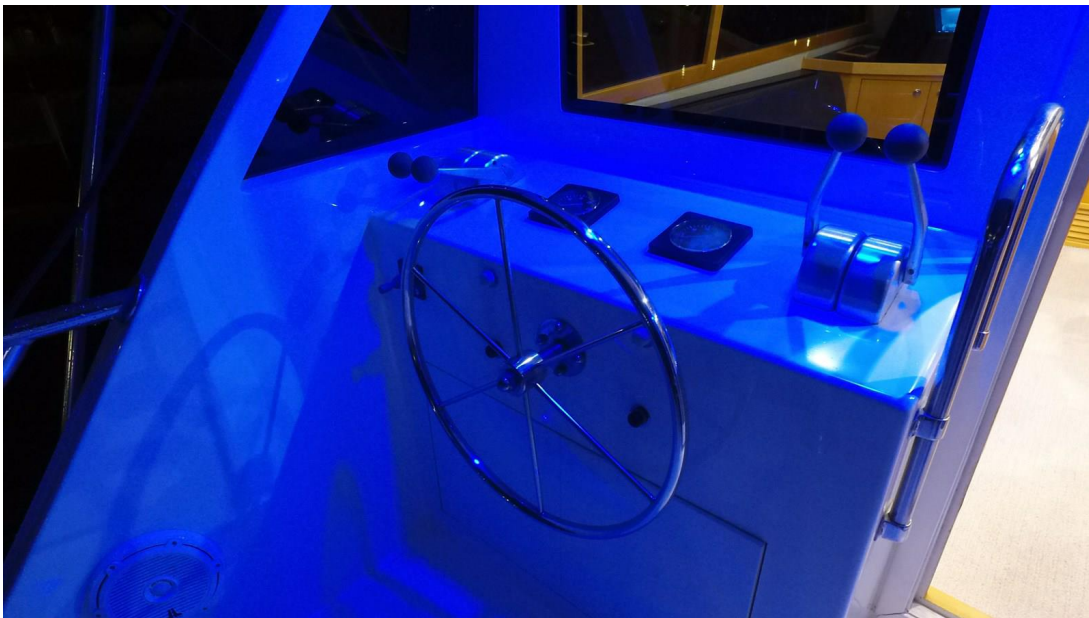
FlyBridge Helm Chair



Port Side Controls



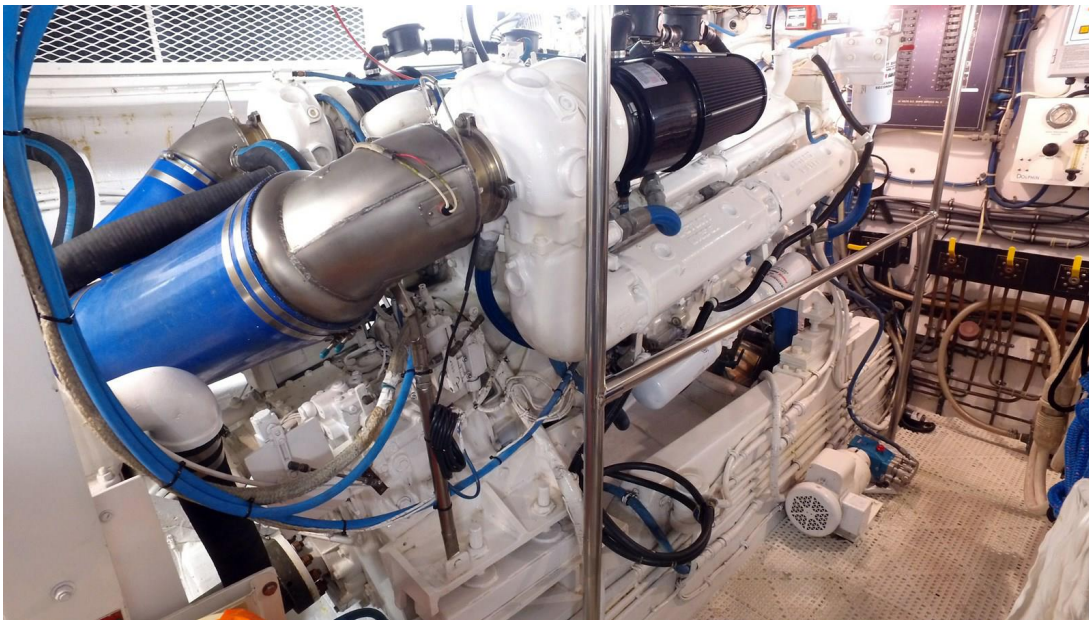
Port Side Controls



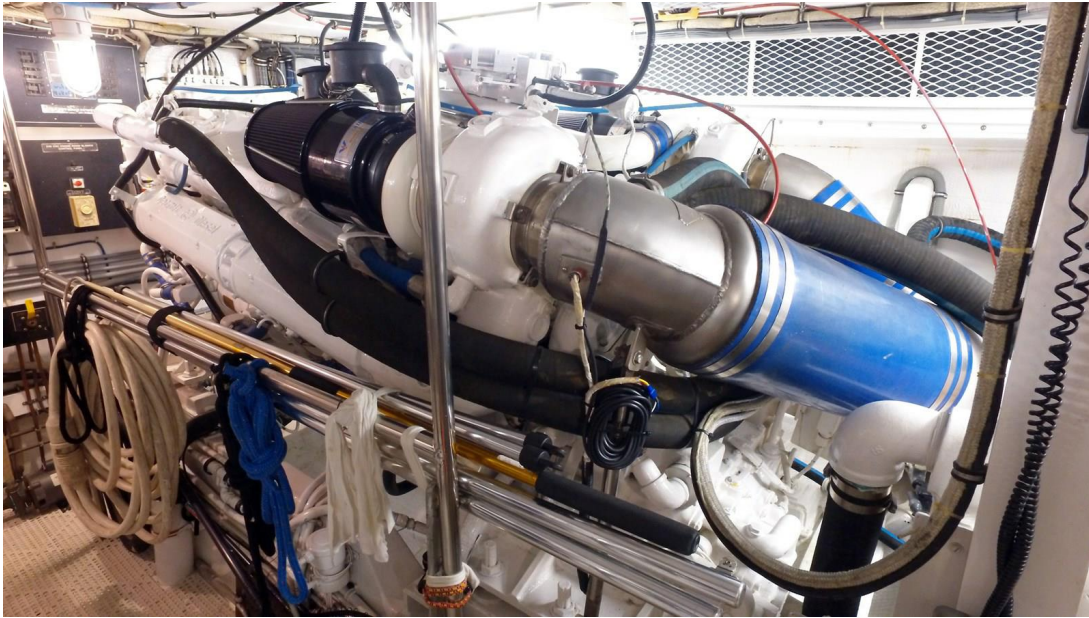
Engine



Engine



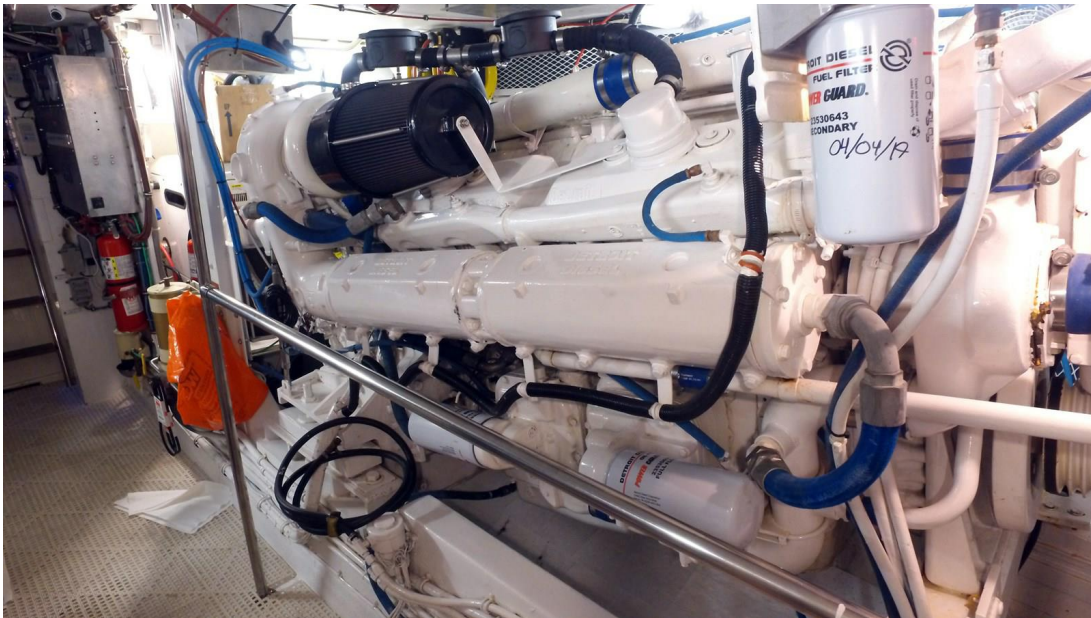
Engine



Engine



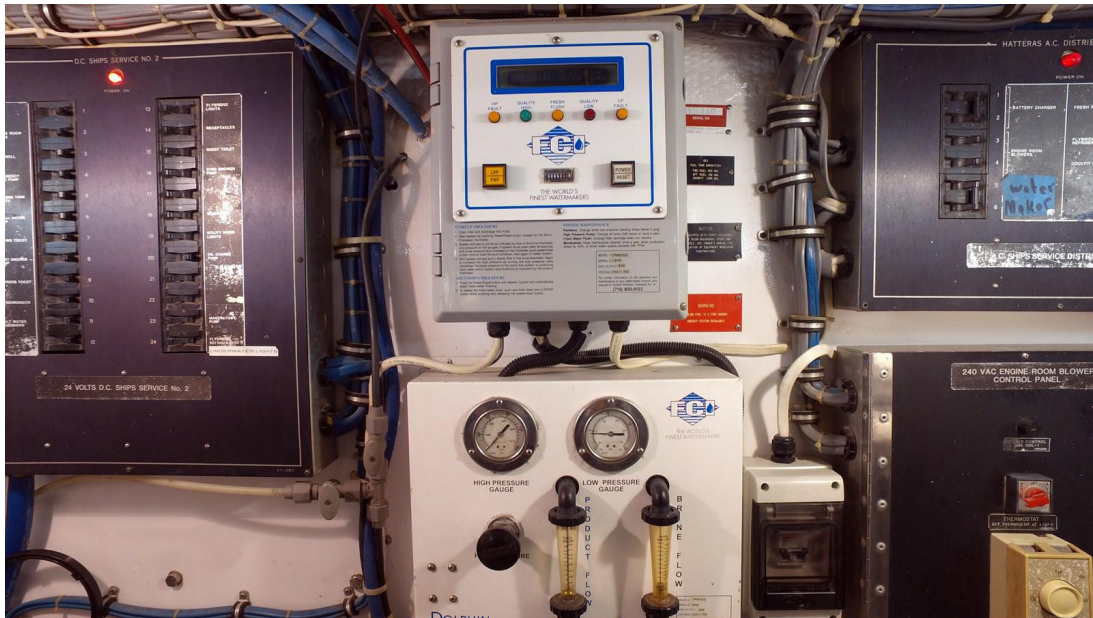
Engine



Engine



Engine



Engine



Engine



Engine



Engine



Doghouse

